

Lithium Batteries

FLOW CHARTS

IATA 2022



Last Revised: 20 JANUARY 2022

Important Notice

DISCLAIMER:

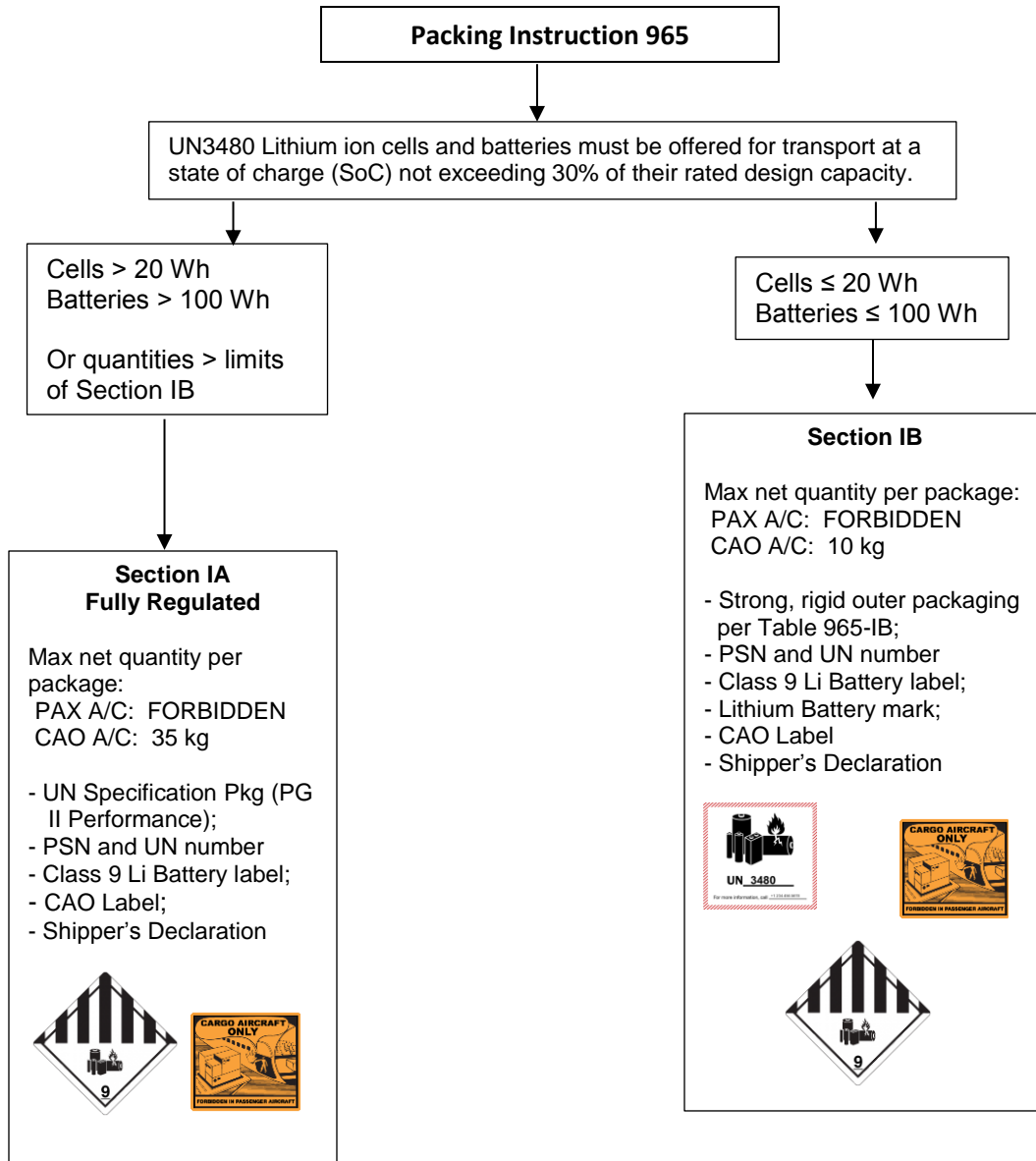
The information contained in these guidelines is subject to constant review in light of changing government requirements and regulations. No student, reader or viewer should act on the basis of any such information without referring to applicable laws and regulations and/or without taking appropriate professional advice. Although every effort has been made to ensure accuracy. Bureau of Dangerous Goods, LTD. shall not be held responsible for any loss or damage caused by errors, omissions, misprints or misinterpretation of the contents hereof.

Bureau of Dangerous Goods, LTD. All Rights Reserved.

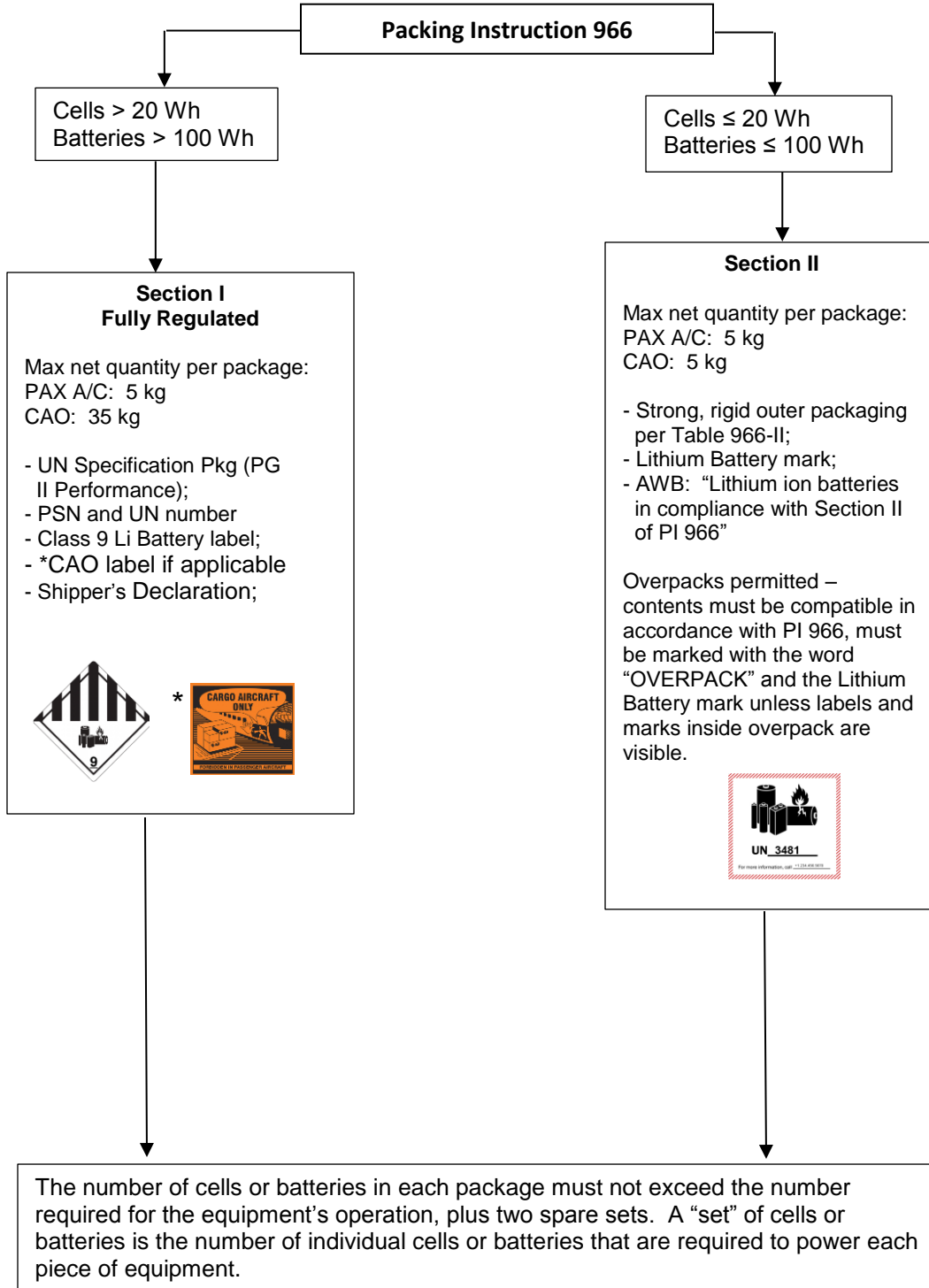
No part of these guidelines may be reproduced, reformatted or transmitted in any form by any means, electronic or mechanical, without the prior written permission from:

Bureau of Dangerous Goods, LTD.
1093 A1A Beach Boulevard
Suite 102
St. Augustine, FL 32080

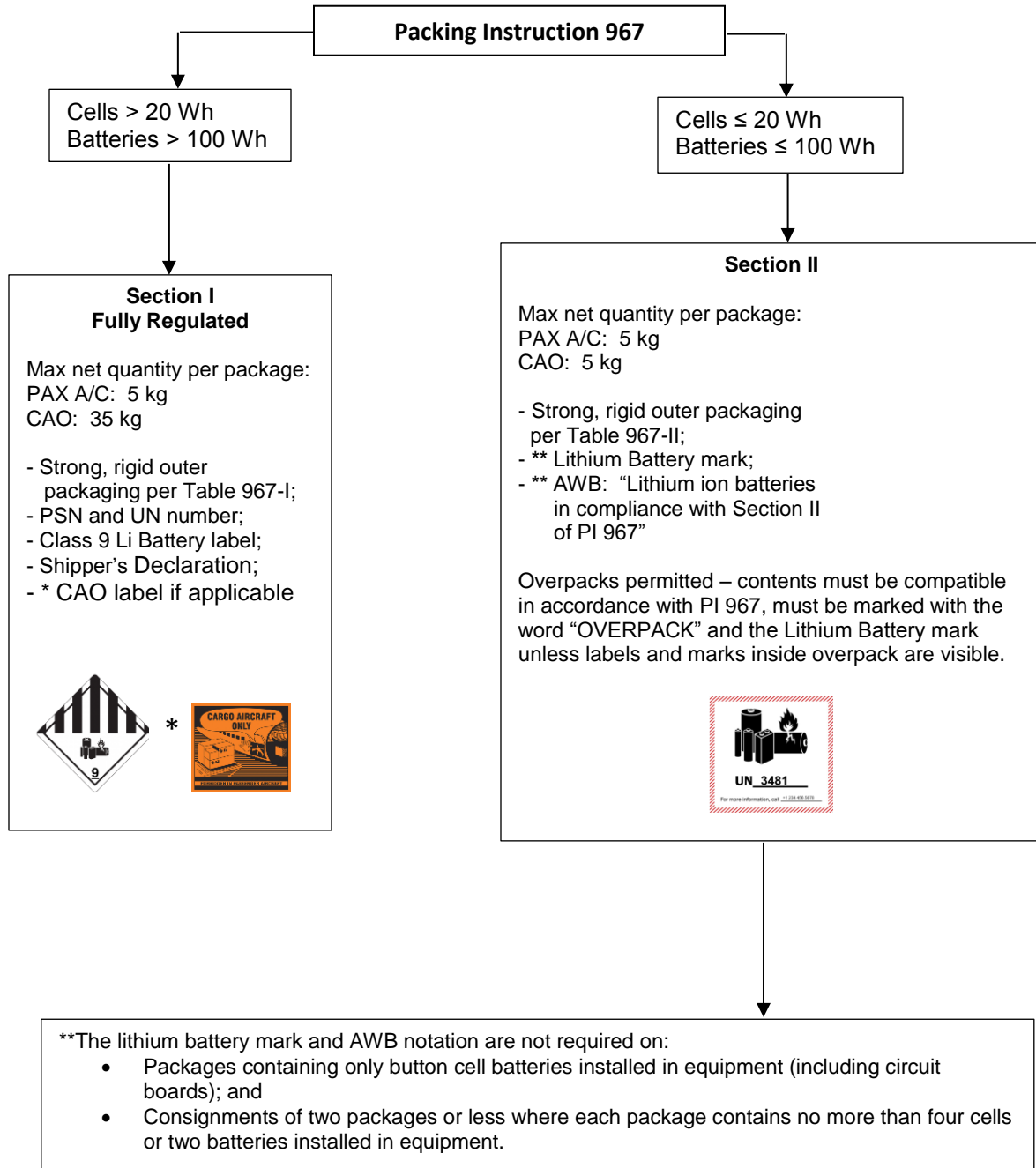
UN 3480 - LITHIUM ION BATTERIES FLOWCHART – (CARGO AIRCRAFT ONLY)



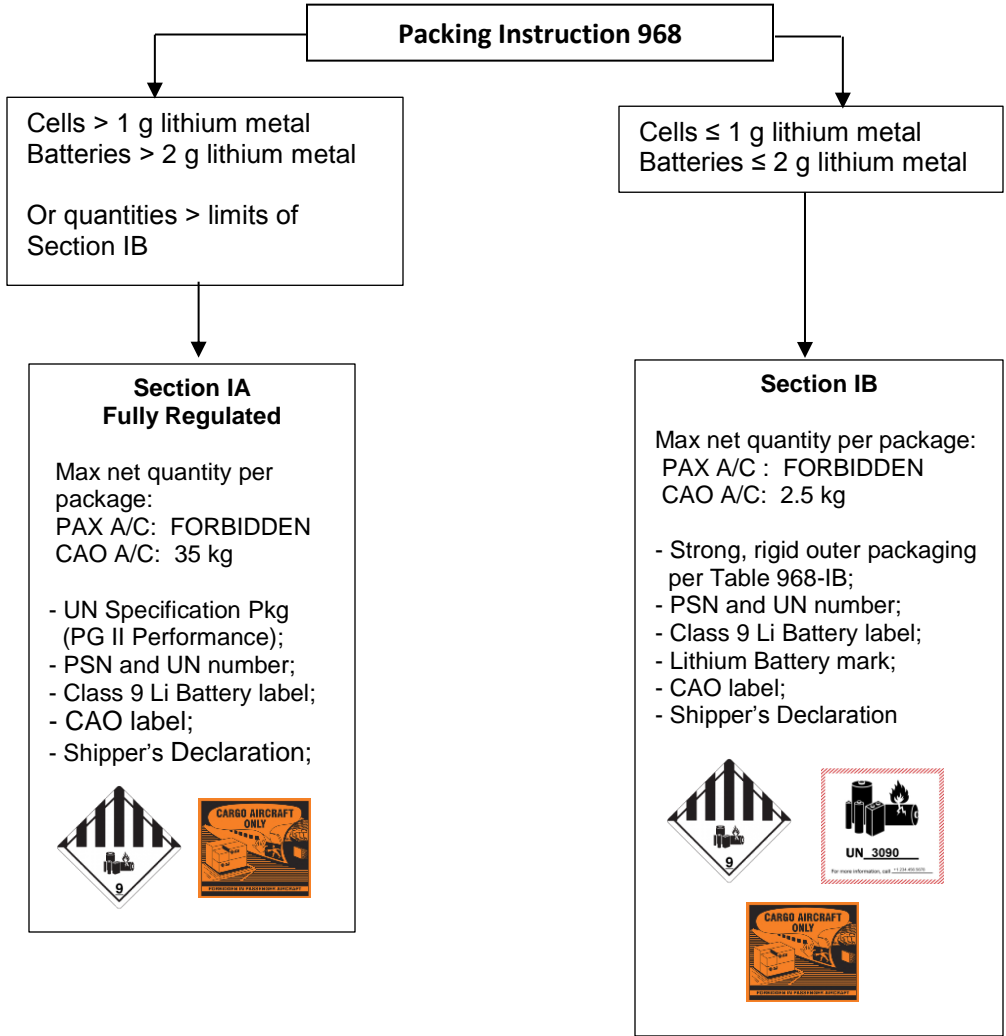
UN 3481 - LITHIUM ION BATTERIES PACKED WITH EQUIPMENT



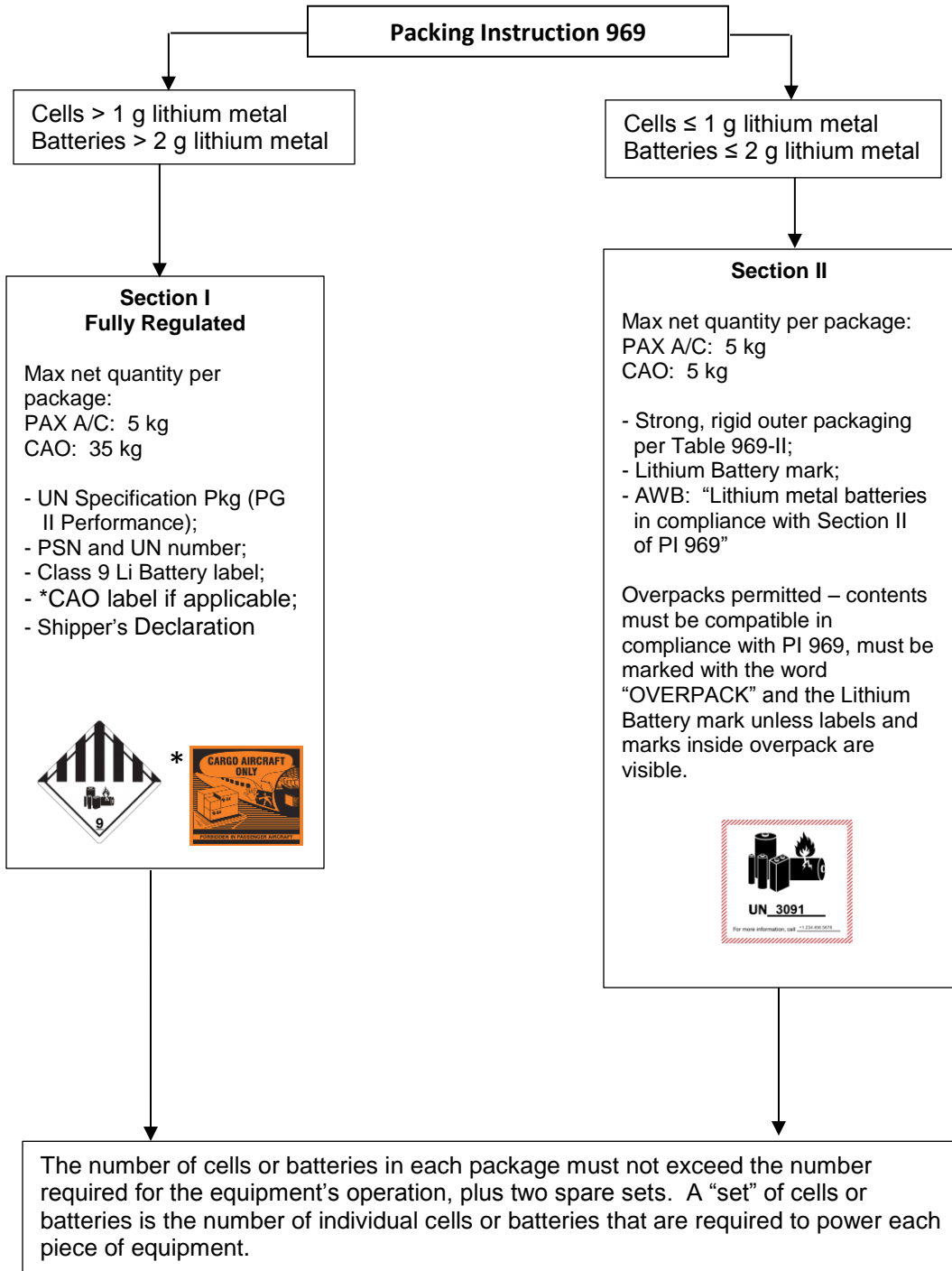
UN 3481 – LITHIUM ION BATTERIES CONTAINED IN EQUIPMENT



UN 3090 - LITHIUM METAL BATTERIES – (CARGO AIRCRAFT ONLY)



UN 3091 - LITHIUM METAL BATTERIES PACKED WITH EQUIPMENT



UN 3091 - LITHIUM METAL BATTERIES CONTAINED IN EQUIPMENT

